

PRODUCT SPECIFICATION



Product Name : LED Flood Light

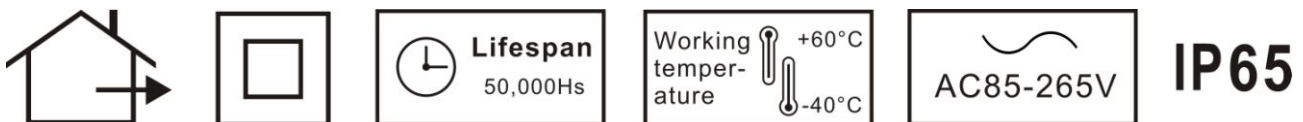
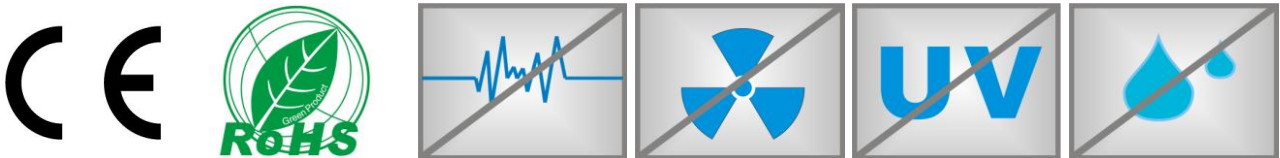
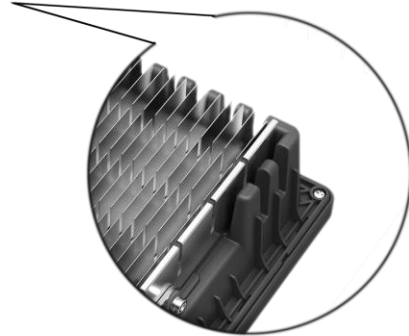
Part No : PG-150SLBGXX

Approval No: 201305030008

TECHNOLED

1、 Features:

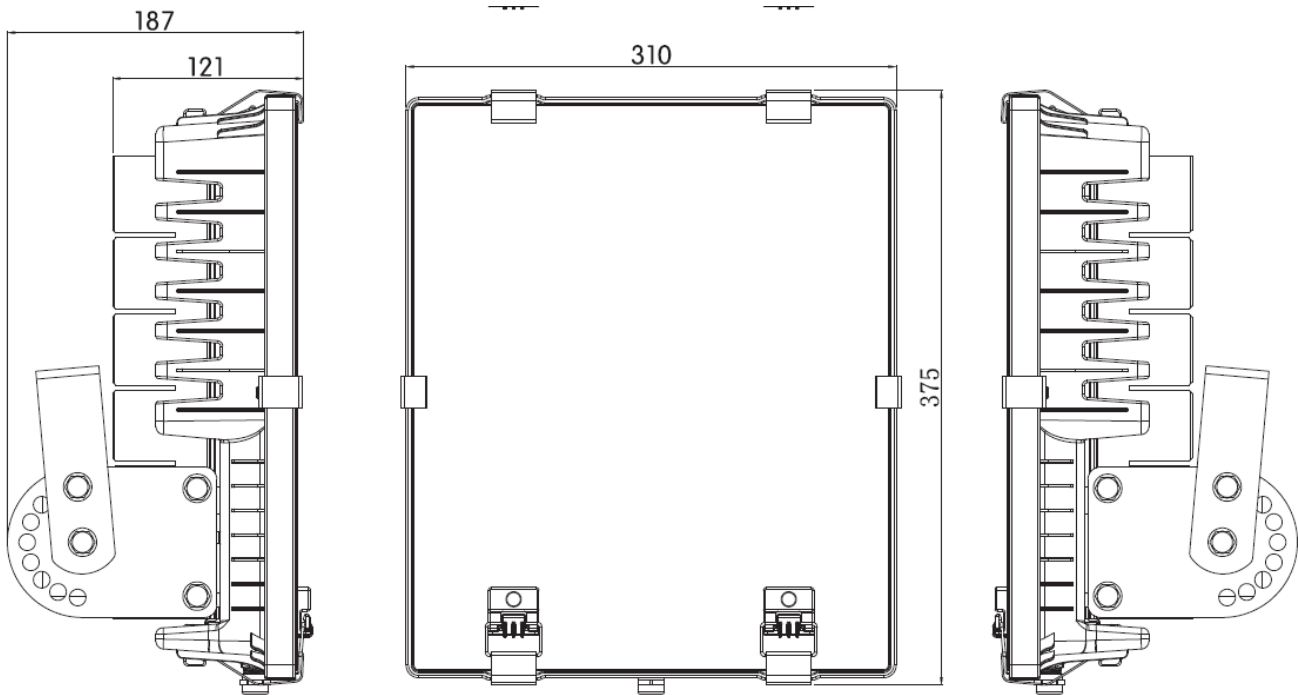
- Full waterproof design
- High transmittance empered glass,transmittan 93%
- The radiating area 8500cm²
- Multi-Chip on lead frame,single module LED package design
- System design integrating power supply,LED light engine ,and heat sink
- Over Current,Over Voltage,Over Heat,Thunder Protection
- Choice of correlated color temperatures
- Long lifespan for LED 50,000 hrs
- Complying with CE、 ROHS, No strobing during working, Fast response (no delay) , No mercury vapour , No radiation,No UV,No damage with frequency switching
- IP Rating: IP65
- Power supply direct touch the radiator,in light weight



2、 Application area:

- Replacing traditional High Pressure Sodium lamp or metal halide lamp.
- Widely used for advertise billboard、 exterior wall of hotel and related landscape lighting.

3、 Product Dimensions:



Attentions:

- 1、 All dimension units are millimeters.
- 2、 All dimension tolerance is $\pm 1\text{mm}$ unless otherwise noted.

4、 Product Specification:

Input voltage: AC85V~265V

Frequency range: 50Hz~60Hz

Total harmonic distortion: $\leq 9\%$

Power factor: ≥ 0.9

Power efficiency: $> 85\%$

System consumption: 155W

LED package: Multi-chip on led frame, Single module

LED consumption: 142W

TECHNOLED

LED Working voltage: DC30~36V

LED quantity: 1PCS

LED luminous: >13500 lm

LED luminous efficiency: 90~100 lm / W

CRI: >80

Average illuminance: H=6m >92 lux

H=8m >60 lux

H=10m >38 lux

Facula area: H=6m 12m×12m

H=8m 15m×15m

H=10m 18m×18m

Illuminance uniformity: >0.68

LED Junction temperature: ≤60°C

Operational condition: Temperature -40°C~60°C

Humidity 10%~90%RH

Storage temperature: -40°C~85°C

Working life-span: >50,000H

Connect wire: Brown-L Blue-N Yellow/Green-G

Beam angle: 120°

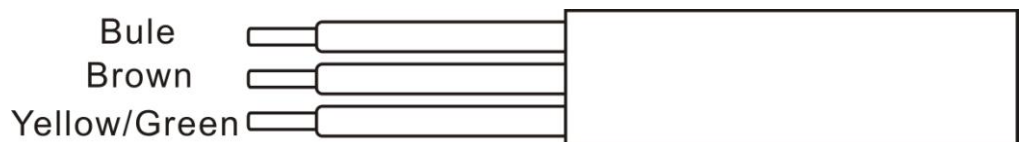
IP Grad: IP65

Housing: ABS and Al alloy

Mounting Height: Suitable for 8~10m height

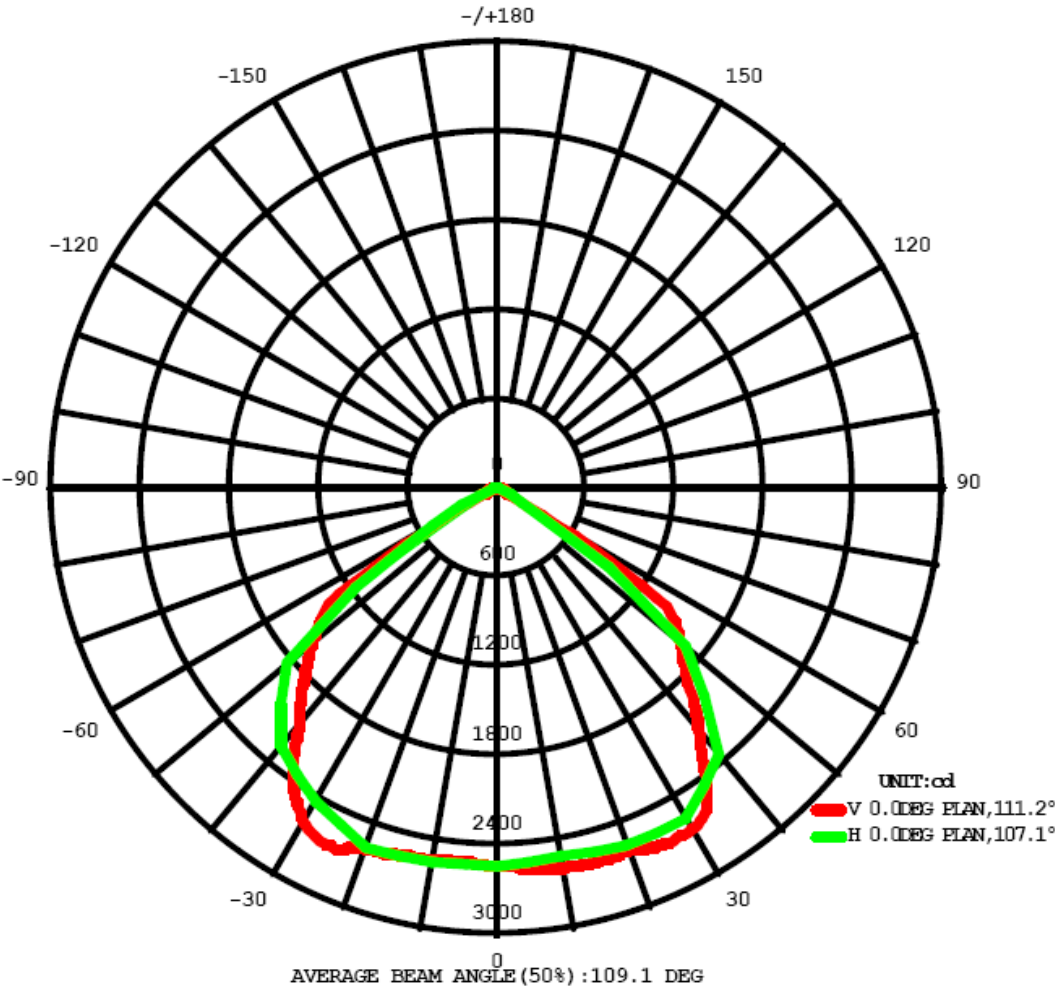
5、Connect wire:

- Blue—Neutral
- Brown—Line
- Yellow/Green—Ground



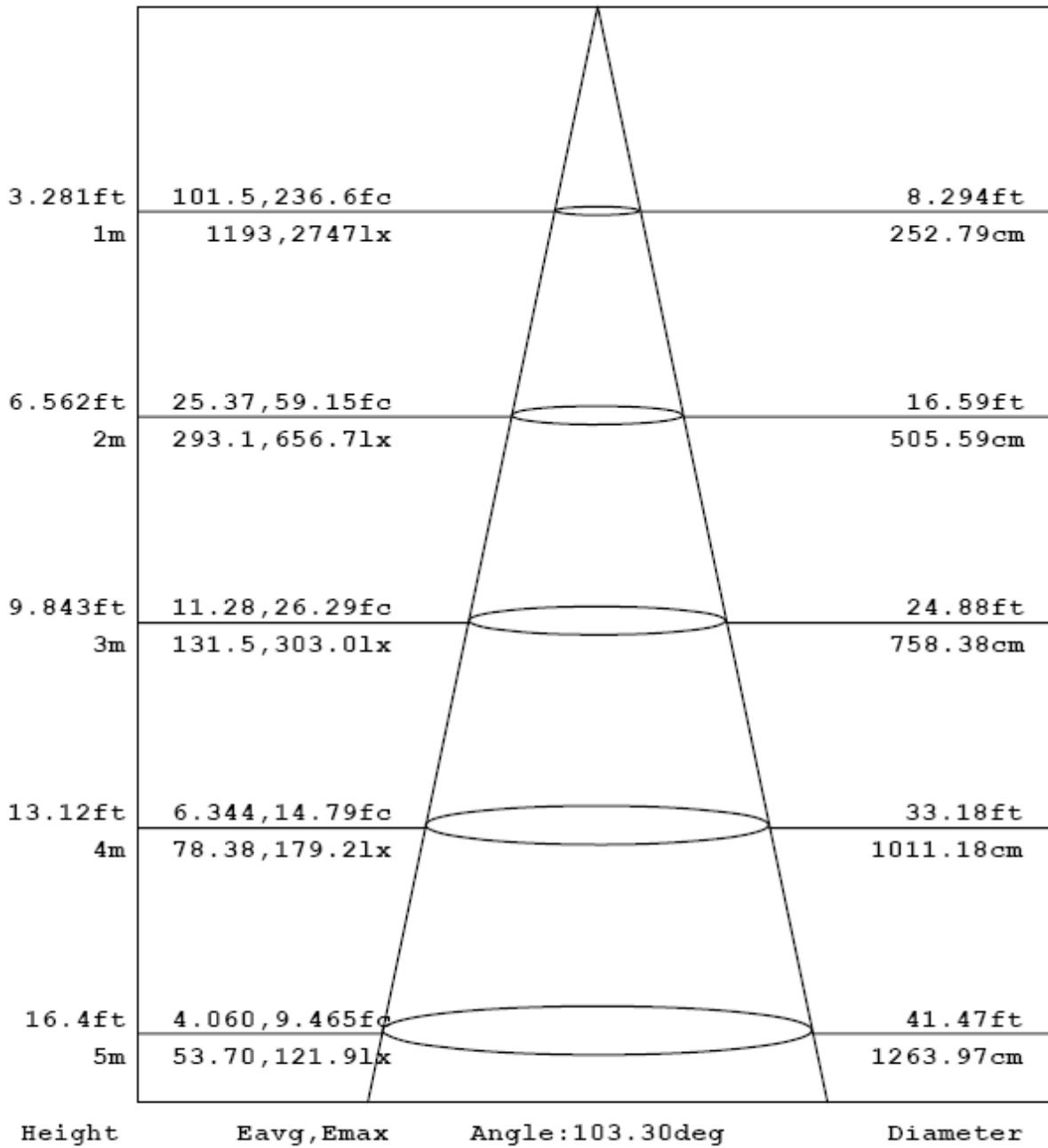
6、Polar Diagram of Luminance:

TECHNOLED



TECHNOLED

7、AAI:

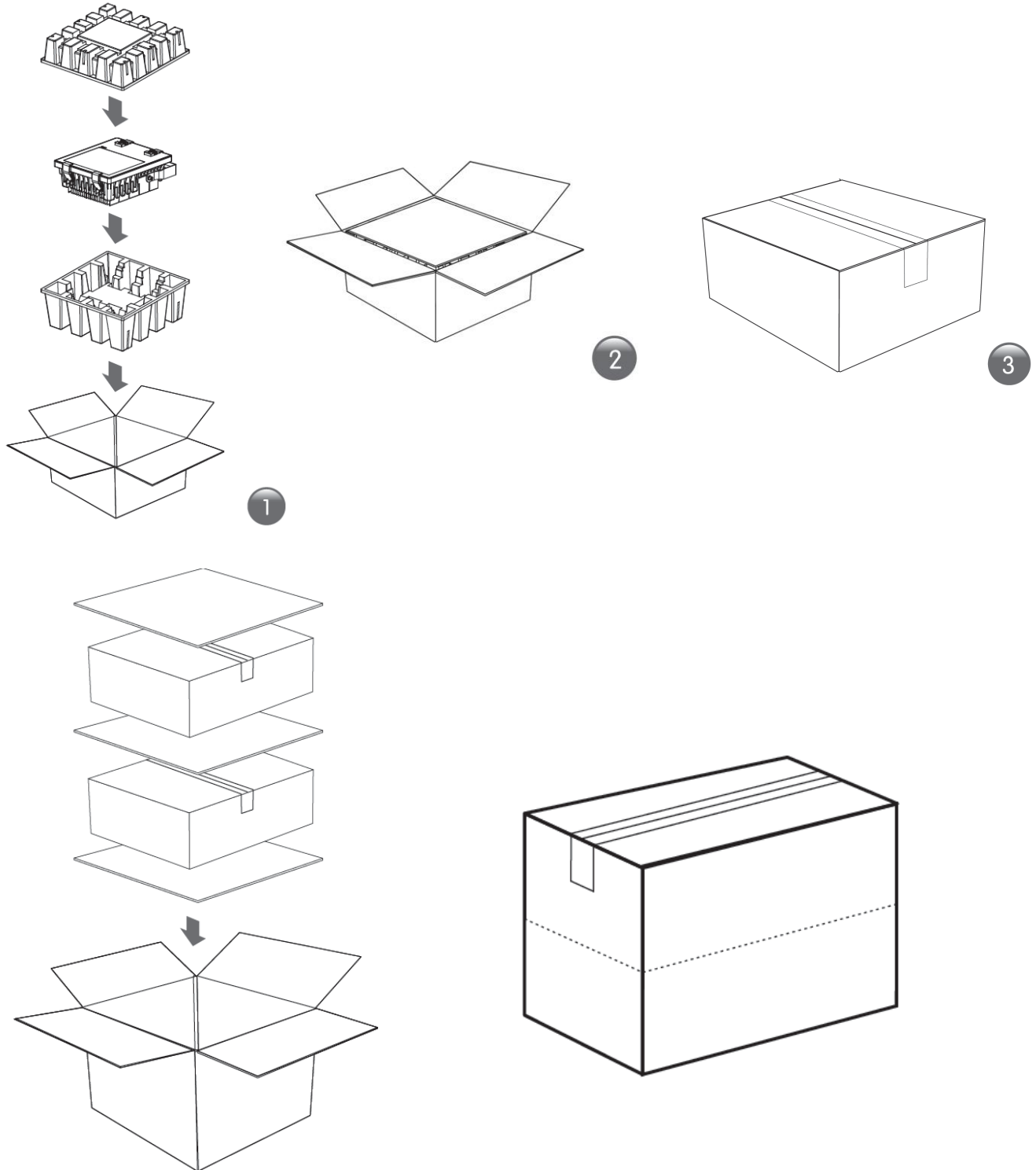


Attentions:

All data is under 25°C, unless otherwise specified

8、Package:

- 1 Set = 460mm × 405mm × 265mm 7.2Kg
- 1 Carton = 2 Set Size: 485mm × 430mm × 600mm 19.2Kg



9、 Installation:

- Installation tool: A adjustable wrench group.
- Installation Steps:
 - ① Tighten Axle Screw, and Locate Screw
 - ② Connecting the power line of LED Flood Light to the power supplier ,finish the installation procedure
- The installation notices:
 - ① No necessary using other devices for LED Flood light installation such as stabilizer, regulator and so on
 - ② Opening the light and lifting the buckle is unallowable.
Soaking in the water is unallowable

10、 Warning:

- Do Not Use Other Devices for LED Floodlight Installation Such as Stabilizer, Regulator ...etc
- Do Not Open the Light Engine
- Do Not Soak the Floodlight into Water
- Do Not Light up the System Without Grounding
- Do Not Use Dimmer

11、 Warranty:

- 2 Years Warranty Starts from Taking Delivery of Goods a Day. The Warranty Content Includes the Damage of All Components, Such as LED Light Source and Power Supply...etc.
- The Floodlight Must Operate at the Common Normal Environment. As in Order to be Faced by the Sea Road in 3 Kilometers or to Use in the Bad Environment Such as Tunnel, Warranty Period is Within 1 Year.
- The Calculation of Warranty Period with Turn on the Light for a Day 8-10 Hours is Limited. As Everyday Longer Than 10 Hours, Then Gradually Decrease According to Comparison Warranty Time Limit.